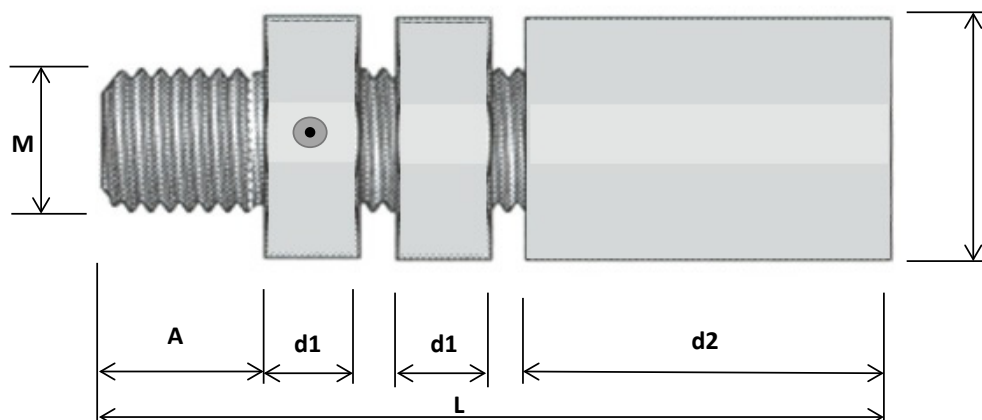


PRC - Position Rebar Coupler

The position coupler is assembled from a threaded bar with a nut and an internally threaded coupler sleeve with a lock nut. The PRC position couplers are suitable for a bent or straight reinforcement bar of which neither can be rotated, and where the space for the connected rebar is limited.

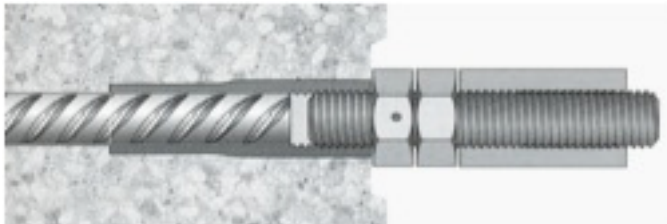


PRC	Length L mm	Diameter Rebar	Thread M	A mm	D mm	d1 mm	d2 mm	Weight Kg/pc
PRC-10-M12	71	10 mm	M 12	15	19	10	36	0,42
PRC-12-M16	93	12 mm	M 16	19	24	13	48	0,69
PRC-14-M18	106	14 mm	M 14	22	27	15	54	0,85
PRC-16-M20	116	16 mm	M 20	24	30	16	60	1,33
PRC-18-M22	128	18 mm	M 22	26	32	18	66	1,85
PRC-20-M24	138	20 mm	M 24	28	36	19	72	2,28
PRC-22-M27	156	22 mm	M 27	31	41	22	81	2,75
PRC-25-M30	173	25 mm	M 30	35	46	24	90	3,30
PRC-26-M33	189	26 mm	M 33	38	50	26	99	4,35
PRC-28-M36	207	28 mm	M 36	41	55	29	108	5,65
PRC-30-M36	207	30 mm	M 36	41	55	29	108	6,70
PRC-32-M42	246	32 mm	M 42	48	70	36	126	7,90
PRC-34-M42	246	34 mm	M 42	48	70	36	126	8,20
PRC-40-M48	275	40 / 43 mm	M 48	55	75	38	144	9,10

Material : coupler Steel 52.3, zinc plated.
The position coupler will be delivered assembled.

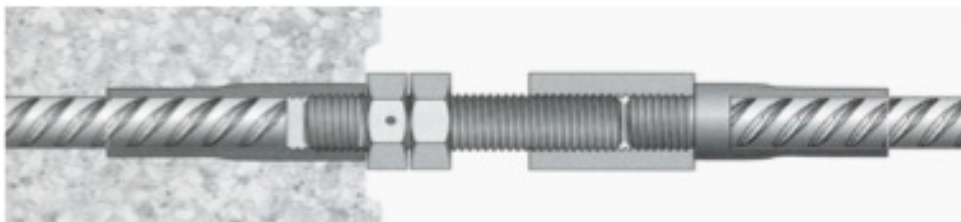
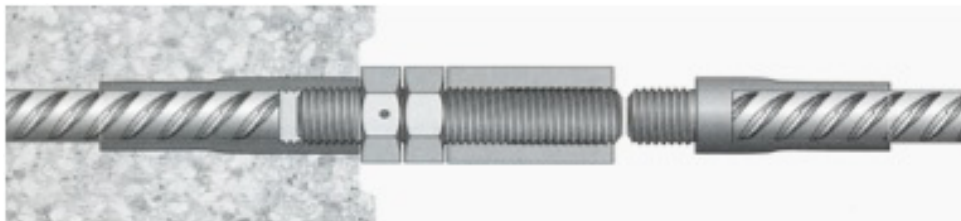
User instruction PRC position coupler

1-Turn the position coupler PRC into the already installed female coupler type FRC

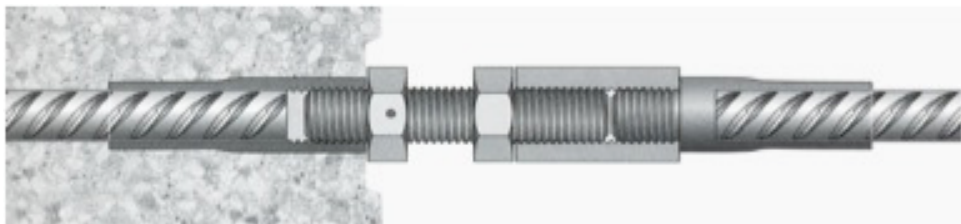


2-Tighten the PRC coupler by using of a wrench.

3-Hold the bended MRC coupler before the PRC coupler and screw the thread bush of the PRC coupler into the FRC coupler.



4- Ensure the connection by tightening the locknut by means of a wrench.



No need to use a torque wrench.

